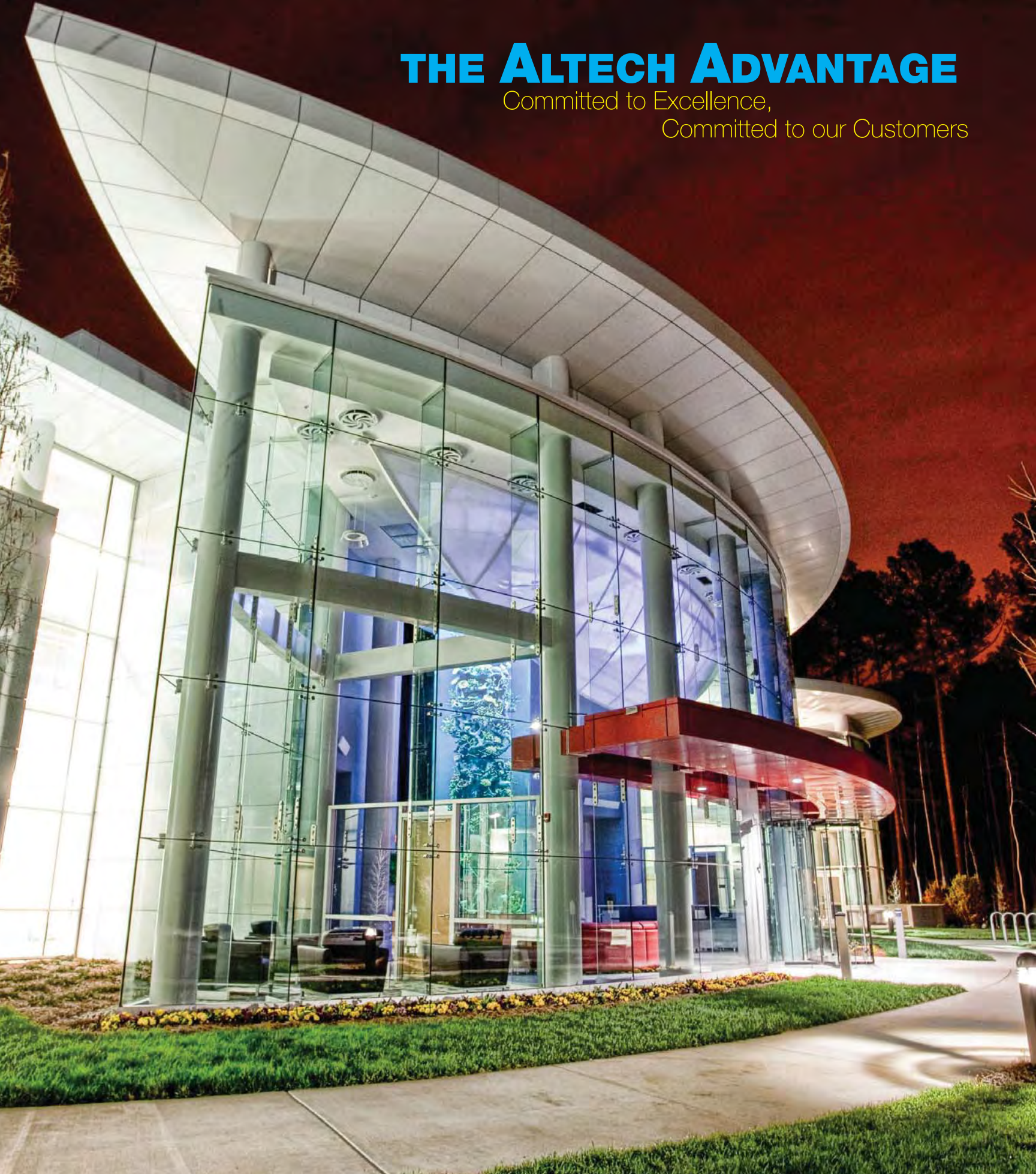


# THE ALTECH ADVANTAGE

Committed to Excellence,  
Committed to our Customers





**PROJECT:** McAlister Campus Center **ARCHITECT :** LS3P Associates LTD.

**PROJECT:** St. Joseph Hospital **ARCHITECT:** Freeman-White



# YOU IMAGINE THE BUILDINGS,

A national company for over a decade and member of the MCA, Altech Panel Systems is committed to providing you beautiful, innovative solutions for your project no matter how complex it may be. Our experienced staff provides solutions for your design ideas. Our devotion to detail, quality and our personal attention to you and your needs drives us to create the perfect metal cladding solution for your project. Our wide variety of MCM systems including the patented Accu-Trac® System, R-Trac System, Low Profile System, Large Scale Graphic panels and our Key-Trac Interior System, offer exceptional affordability and value!

**COVER PROJECT:** United Therapeutics **ARCHITECT:** O'Brien Atkins

As an industry leading manufacturer of high-performance wall panel systems for both exterior and interior applications, Altech Panel Systems is dedicated to producing only the most thoroughly engineered and tested systems. We continually strive to advance wall panel systems for the benefit of our customers. In fact, because of the **Altech Advantage**, "Committed to Excellence, Committed to Our Customers", we advance our whole industry!

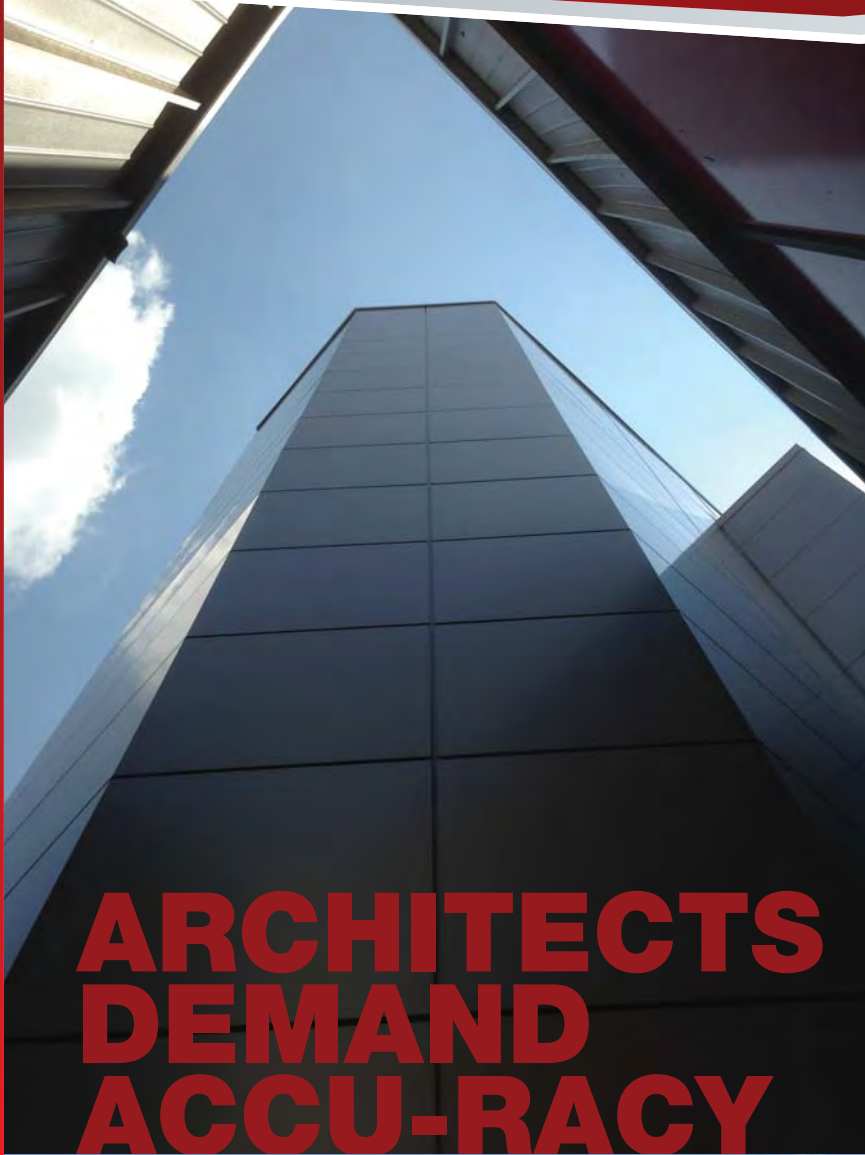


PROJECT: Woodson Community Center ARCHITECT : DP3

**WE CREATE SOLUTIONS TO MAKE THEM A REALITY.**



PROJECT: Welcome Center ARCHITECT: CJMW Architecture



The cutting edge **Accu-Trac® DS** system is a dry-joinery system utilizing variable reveals to emphasize the vertical and horizontal joints in lieu of exposed sealants. The DS system offers very sharp, crisp joinery with the advantage of variable widths. The DS system installs quickly and easily with our patented sliding clip technology. Custom reveals can be readily incorporated.



(all above) **PROJECT:** Hartsfield-Jackson Airport Concourse D **ARCHITECT:** PGAL



**PROJECT:** Middle Georgia State College - Macon Campus  
**ARCHITECT:** Lyman Davidson Dooley

# SO, WE ENGINEERED OUR ACCU-TRAC SYSTEMS



**PROJECT:** Mezzo Condominiums **ARCHITECT:** Smallwood, Reynolds, Stewart, Stewart Assoc.

The **Accu-Trac® ES** system is an exposed seal panel system utilizing a backer rod and silicone sealant in both the vertical and horizontal joints. Like our DS system, Accu-Trac® ES provides ease of installation using our patented sliding clip technology. Our panels can be integrated into adjacent systems such as windows, louvers and other materials. The Accu-Trac® ES system serves as the primary air and moisture barrier protecting your building from the elements. Additionally, the ES system can be used in high velocity wind zones without the need for plywood substrate or supplemental reinforcing as required with other systems. This saves our customers both time and money!



**PROJECT:** Barbara Loar Library  
**ARCHITECT:** Richard Wittschiebe Hand



**PROJECT:** Univ. of North Florida **ARCHITECT :** PSA-Dewberry Architects

The **R-TRAC H.V.H.Z.** system is a pressure equalized rainscreen featuring Rmax ECOMAXci® polyisocyanurate (polyiso) insulation and Alpolc aluminum composite material. This system meets new continuous insulation requirements and includes approval for all coastal regions. The R-Trac System carries Florida Building Code Approval, meets the rigorous Miami Dade testing requirements and has high velocity hurricane zone approval with a “dry-joint”. This means there’s no caulk in the joints to wear out! The R-Trac system has been tested and listed to meet NFPA 285, ABAA Air Barrier Assembly criteria and ICC-ES Water-Resistive Barrier acceptance criteria. Additionally, Rmax ECOMAXci® polyiso insulation offers the highest R-value per inch of any comparable insulation, achieving up to a 20.3 R-Value in a three inch nominal thickness. Since ECOMAXci® provides continuous insulation, thermal leaks associated with steel studs are eliminated as is thermal bridging! With current building codes changing and few options available to architects, builders and contractors in high-wind hurricane zone areas are choosing the Altech R-Trac H.V.H.Z system with ECOMAXci® continuous insulation to meet the tough demands of their projects!



**PROJECT:** Sliddell Medical Center  
**ARCHITECT :** Sizeler Thompson Brown Architects

Altech's **EFS** (Exposed Fastener System) is the latest in the Altech family of products. Altech's open-joint rainscreen system has been designed to offer designers the look, feel and performance of a European face-fastened rainscreen system, such as phenolic resin panels, at a fraction the cost! Fasteners are stainless steel and tamper-proof while our support system can be tailored to fit individual project requirements. Altech's EFS system is lightweight and installs easily and quickly. A nearly endless variety of colors, natural metals, wood grains and stone patterns are available which allows EFS to be utilized in either exterior or interior applications **and** fit any design!



(above / below) **PROJECT:** Red Ventures **ARCHITECT :** Overcash Demmit Architects

...A FRACTION OF  
THE COST!



# ...VARIETY OF SIZES AND SHAPES....

Altech's Interior **Key-Trac** system is designed to provide the architect or designer with an extremely thin assembly depth, as thin as 1/2". Our system installs easily with a back panel mounted to conventional drywall and metal studs. The face panels are available in a limitless variety of sizes and shapes as well as different colors to meet all of your design requirements. Damaged panels or new panels can be replaced without damage to the surrounding panels! This means that changing designs or replacing an in-place panel is a snap, is surprisingly affordable and can even be... just plain fun!

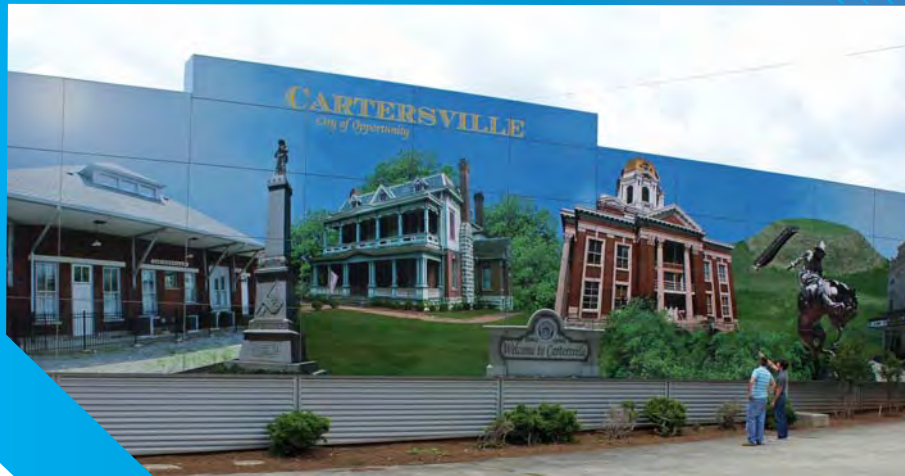






Altech specializes in wall panel systems that double as large-scale media. If you are interested in large-scale graphics for exterior or interior applications, Altech is your single source, one-stop provider of this unique system!

PROJECT: Bookwood High School DESIGN BY : Owner



Whether your design calls for a “Times Square” sized graphic image or just a logo on signage, Altech’s LSG system is the cost-effective answer. With Altech’s LSG System, there is virtually no limit to the size of the image that can be incorporated into our metal panel system, nor is there a limit to the artwork! Any photograph or digital image can be utilized with our system and the results are always stunning!

PROJECT: Tilley Properties DESIGN BY : Owner



PROJECT: Univ. of Tennessee Neyland Stadium ARCHITECT : McCarty Holsaple McCarty



PROJECT: Project Zebra ARCHITECT : Little Diversified Architectural Consulting

# ...ARCHITECT'S ALTERNATIVE TO THE INDUSTRY STANDARD

Altech's **Low Profile DS** system (LP-DS) is designed to provide the architect or designer an alternative to the industry standard 2" – 2-1/2" system depths. Altech's low profile DS system is a 1-1/2" deep, back-ventilated rainscreen with an integral spline. This system is not only designed as a cost-saving alternative to conventional systems, its low-profile allows it to be used in areas where system depth is limited. A nearly endless variety of colors, wood grains, faux stone and natural metal finishes means our Altech Low Profile DS system can be used in either interior or exterior applications **and** fit any design.



# ...ENDLESS VARIETY OF COLORS...

Altech's **Low Profile ES** system is designed to provide the architect or designer an alternative to the industry standard 2" – 2-1/2" system depths. Altech's low profile ES system is a 1-1/2" deep, exposed sealant system. This system is not only designed as a cost-saving alternative to conventional systems, its low-profile allows it to be used in areas where system depth is limited. A nearly endless variety of colors, wood grains, stones and natural metal finishes means our Altech's Low Profile ES system can be used in either interior or exterior applications **and** fit any design.



(all above) **PROJECT:** Time Warner **ARCHITECT :** Duda Paine Architects, LLP.



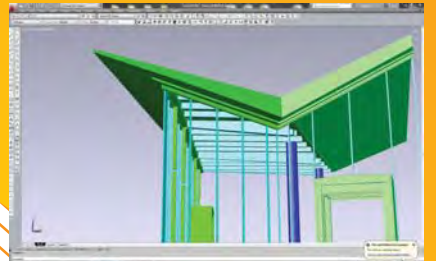
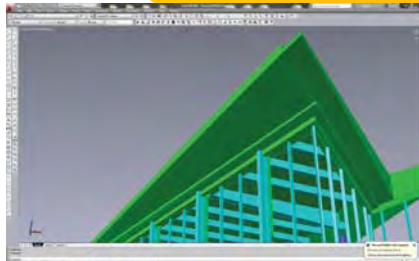
# COMING TOGETHER IS A BEGINNING

Our customers are occupied with the day-to-day task of running their own companies. When it comes to wall panel systems, we make things easy for them! ALTECH proudly offers the following outstanding services and capabilities to our customers:

- Pre-Construction / Budget Pricing (material, installation or both)
- In-House Engineering and Detailing
- Full-time, Dedicated Project Managers
- Schedule Advice and Consultation
- Streamlined Production, State of the Art Equipment
- Unsurpassed Quality (QA Program)
- Loyal, Experienced Fabrication Professionals
- Assistance with Material and or Product Selection and Specifications
- Video Conferencing
- Project History Log and Photography
- Training / Installer Certifications
- Laser Scanning / 3D Imaging



We promise fast responses to your inquiries along with the most effective solutions for both new and renovation projects. Altech Panel System delivers a unique combination of experience, craftsmanship and attention to detail!





PROJECT: Kirkland Medical Center ARCHITECT : Davis - Stokes



PROJECT: Mabry Cancer Center ARCHITECT : Stevens & Wilkinson

# WORKING TOGETHER IS SUCCESS



PROJECT: Wake Forest Baptist Health - West Campus Medical Plaza II ARCHITECT : HKS Inc.



PROJECT: Sunnybrook Rd. Medical Office Building ARCHITECT : Perkins & Will



PROJECT: Net App Center ARCHITECT : O'Brien Atkins



PROJECT: Linear Technology ARCHITECT : Dennis Mires, P.A. The Architects



PROJECT: Avalex Technology ARCHITECT : Hunton Brady & Assoc.

# “FORM EVER FOLLOWS FUNCTION”

Louis Henry Sullivan



PROJECT: Mitsubishi Electric ARCHITECT : O'Neal

**WE HELP  
SHAPE  
YOUR  
BUILDINGS**



**PROJECT:** Carmax, Savannah GA **ARCHITECT :** Pieper O'Brien Herr Architects



**PROJECT:** Courtesy Ford **ARCHITECT :** LRS Architects

**THEREAFTER  
THEY SHAPE  
US**



**PROJECT:** Boyd Honda **ARCHITECT :** Plageman Architecture



**PROJECT:** Emory HSRB **ARCHITECT :** Zimmer Gunsul Frasca Architects LLP



**PROJECT:** Georgia Gwinnett College – Allied Health Bldg. **ARCHITECT :** TVS&A, Inc.

**“YOUR  
PROJECT...  
BUILT WITH  
INTEGRITY”**



**PROJECT:** Emory Candler School of Theology **ARCHITECT :** Collins, Cooper, Carusi Architects



**PROJECT:** Duke University - Events Pavilion **ARCHITECT :** Shepley Bullfinch Architects





BEFORE



AFTER

PROJECT: Peak 10 Data Center ARCHITECT : Reynolds, Smith and Hills, Inc.



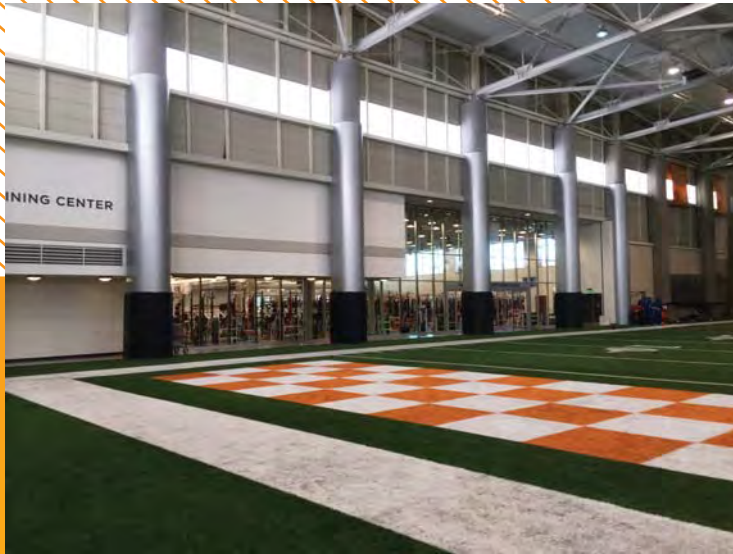
BEFORE



AFTER

PROJECT: St. Joseph Hospital ARCHITECT : Freeman - White

“UNWAVERING  
QUALITY”



PROJECT: UT McKenzie Lawson ARCHITECT : Blankenship & Partners / Cope Associates



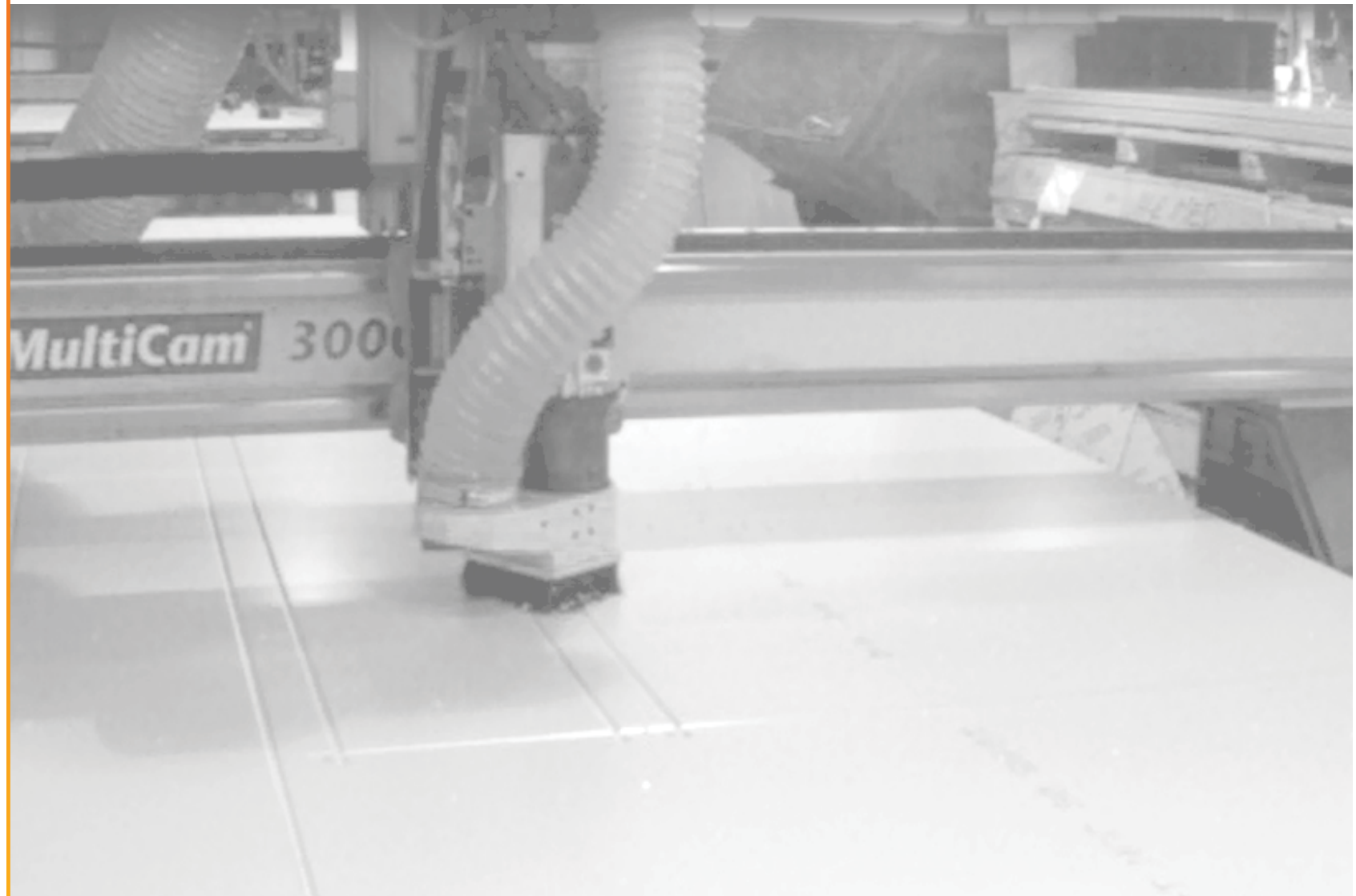
PROJECT: Benedict College Stadium ARCHITECT : Gantt Huberman Architects



PROJECT: Bremen High School



PROJECT: NCSU Indoor Practice Facility ARCHITECT : Corley Redfoot Architects



We challenge you to compare the **Altech Accu-Trac®** system to any other system on the market. We are confident that you will see and experience the superior quality that goes into every panel that we fabricate.

North Entrance

**ALL FABRICATORS  
ARE NOT CREATED  
EQUAL!**



Visit our website at [WWW.ALTECHPANEL.COM](http://WWW.ALTECHPANEL.COM) or call us Toll Free at 855-684-6178  
One Johnson Street, Suite 118, Cartersville, Georgia 30120